

出售



COLDWELL BANKER  
COMMERCIAL  
ATLANTIC



8120 WINDSOR HILL BLVD | NORTH CHARLESTON, SC 29418

位于北查尔斯顿



该灵活空间物业刚刚建成. FLEX空间, 用于办公室、零售或一些仓库。这是一项投资销售。现有租户拥有新的 5年和 10年租约。该建筑配有三相电源、10X12卷帘门。高码头。屋檐高22英尺, 但没有水洒。租金记录将通过保密协议和客户注册来证明。



COLDWELL BANKER  
COMMERCIAL  
ATLANTIC

8120 Windsor Hill Blvd | North Charleston, SC

WINDSOR HILL FLEX SPACE FOR SALE

# WINDSOR HILL FLEX SPACE FOR SALE 出售

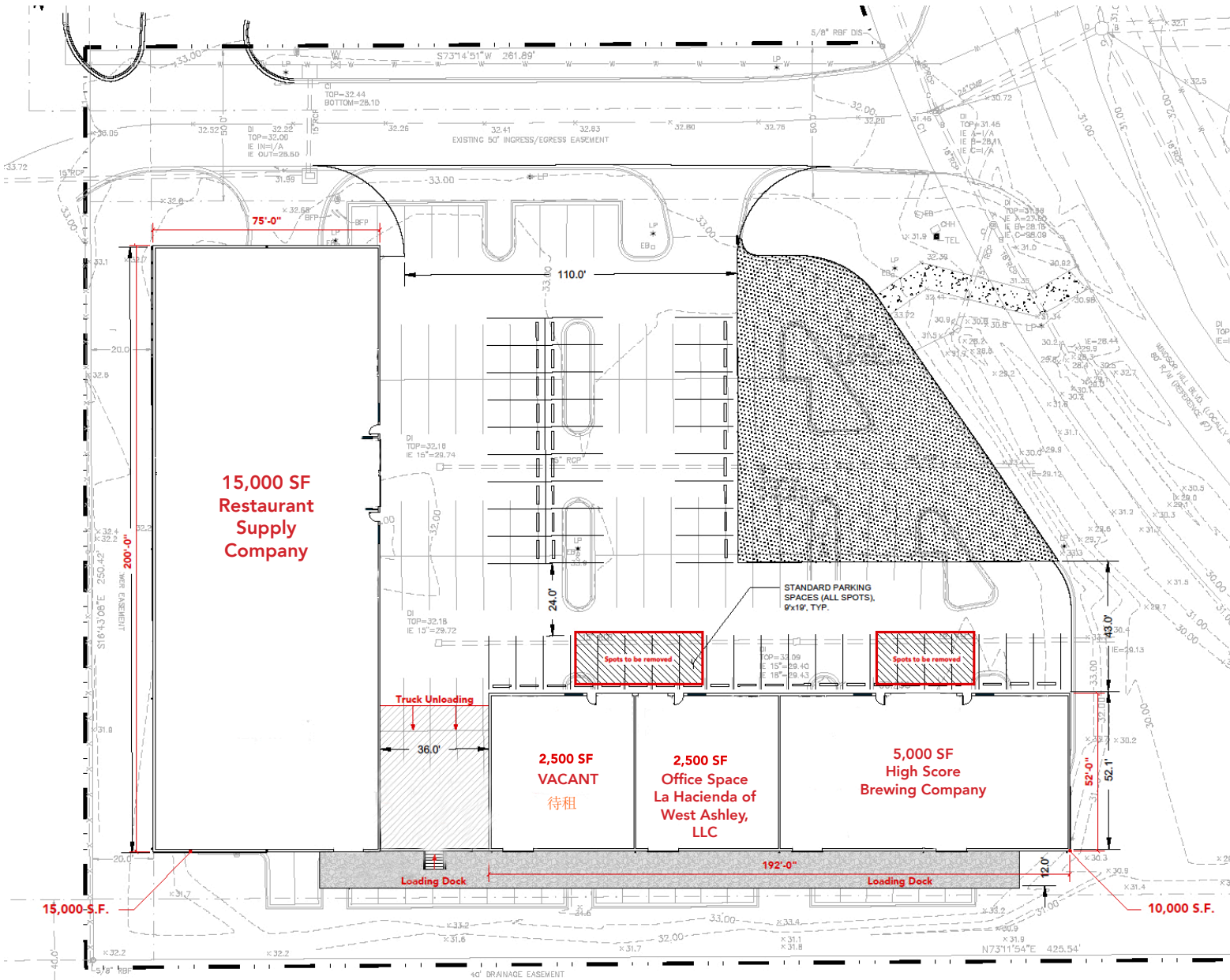


## 出售概要

销售价格:	\$6,300,000	英亩:	2.48 英亩
整体面积SF:	25,000 SF	税号:	172-00-00-041
建筑 1	10,000 SF	郡:	多切斯特Dorchester
建筑 2	15,000 SF	分区:	B2 - 北查尔斯顿
空置 (招租) SF:	2,500 SF		

# WINDSOR HILL FLEX SPACE FOR SALE

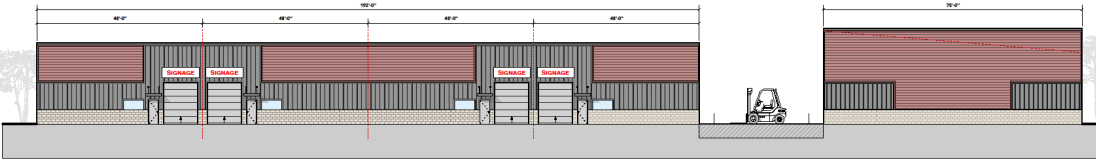
## SITE PLAN 待售场地平面图



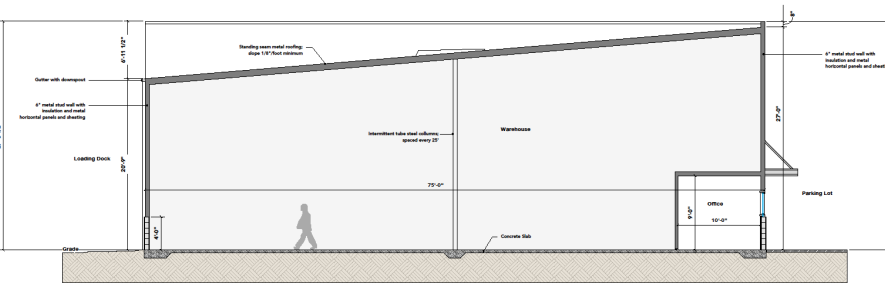
# WINDSOR HILL FLEX SPACE FOR SALE

Building #1: Small Warehouse (10,000 S.F.) 建筑1 小型仓库

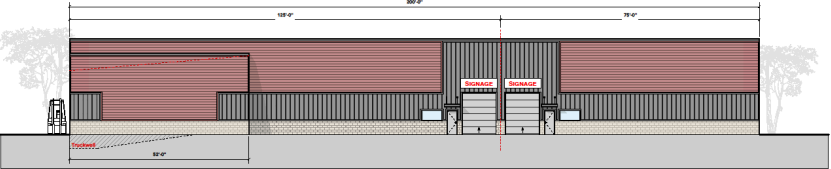
Building #2: Large Warehouse (15,000 S.F.) 建筑2 大型仓库



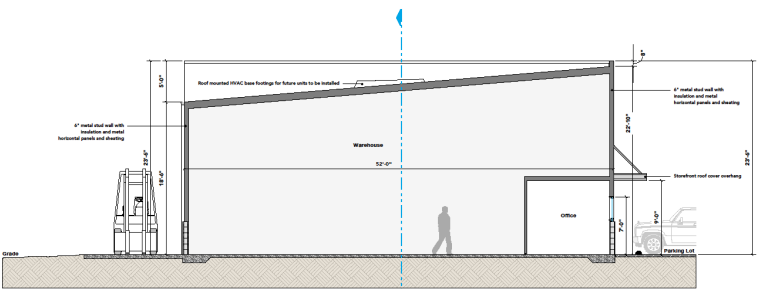
**A** 2.0 FRONT ELEVATION 正视图  
Scale: 3/32" = 1'-0"



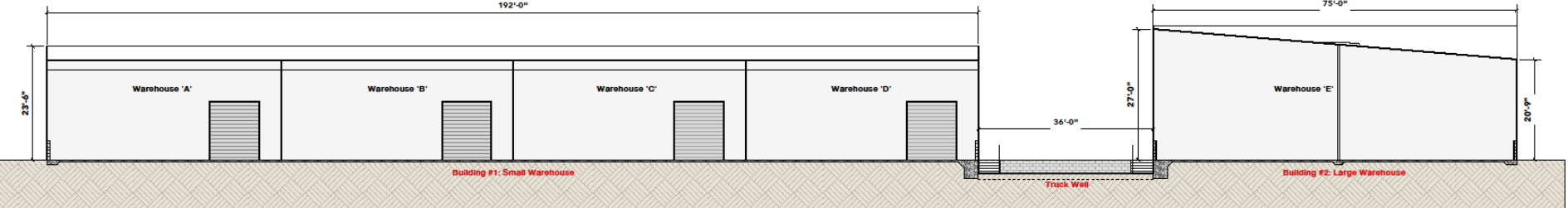
**A** 3.0 Large Warehouse - Cross Section  
Scale: 1/4" = 1'-0"



**B** 2.0 LEFT ELEVATION 左视图  
Scale: 3/32" = 1'-0"



**B** 3.0 Small Warehouse - Cross Section  
Scale: 1/4" = 1'-0"



**A** 3.1 Longitudinal Site Section  
Scale: 3/32" = 1'-0"

# DEMOGRAPHICS 人口统计

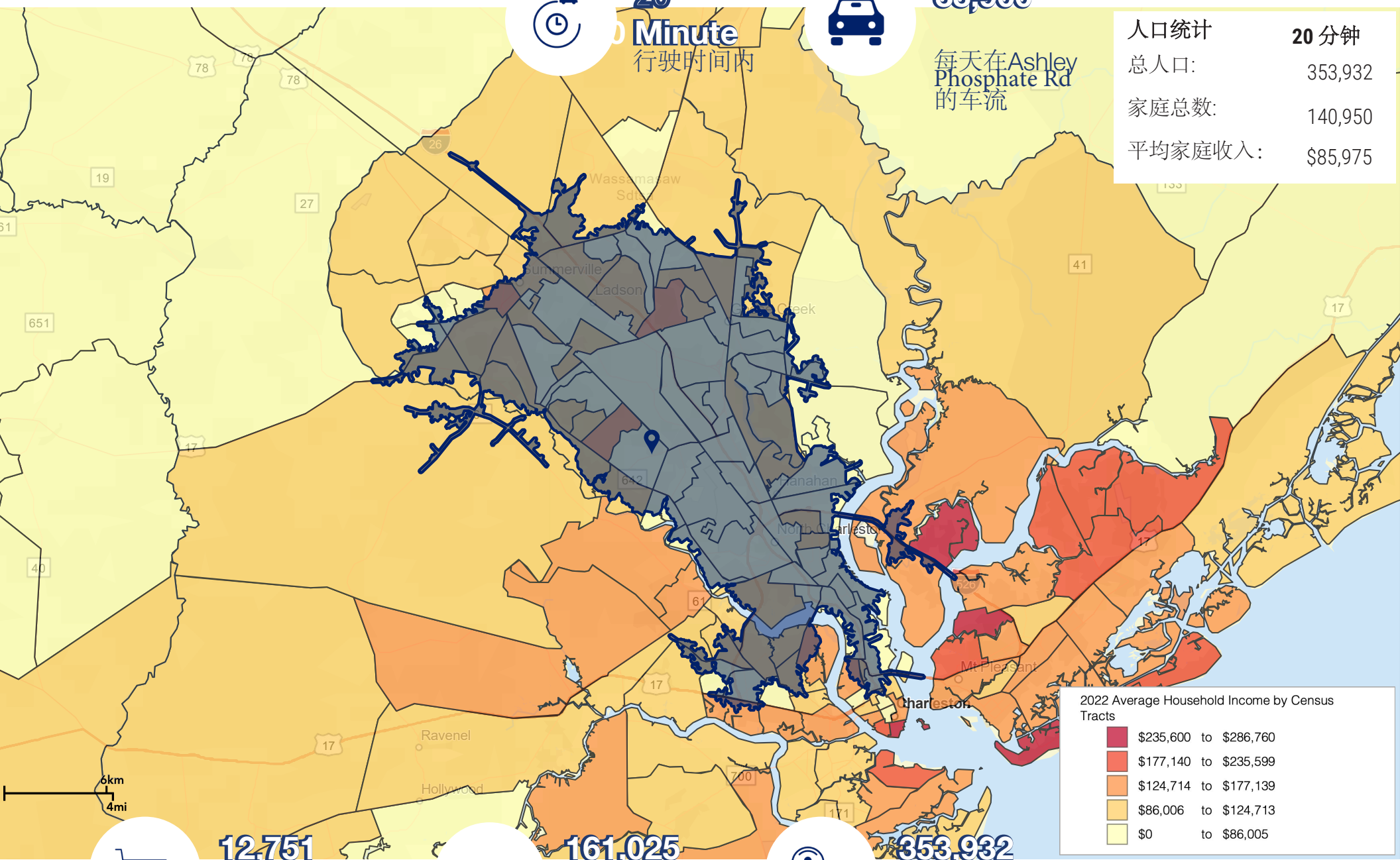
**20 Minute**  
 行驶时间内



**33,900**

每天在Ashley Phosphate Rd 的车流

人口统计	20 分钟
总人口:	353,932
家庭总数:	140,950
平均家庭收入:	\$85,975



2022 Average Household Income by Census Tracts

<span style="color: #800000;">■</span>	\$235,600 to \$286,760
<span style="color: #FF4500;">■</span>	\$177,140 to \$235,599
<span style="color: #FF8C00;">■</span>	\$124,714 to \$177,139
<span style="color: #FFD700;">■</span>	\$86,006 to \$124,713
<span style="color: #FFFF00;">■</span>	\$0 to \$86,005



**12,751**  
 20分钟车程内的  
 生意数额



**161,025**  
 20分钟内车程内的  
 雇员数额



**353,932**  
 20分钟车程内的  
 人口总数

Demographics based on Esri forecasts for 2022



**Brent Case, CCIM**  
PRESIDENT/ BROKER IN CHARGE  
843.270.4192  
bcase@cbcatlantic.com

**Julia Donovan** 袁璟轶  
SENIOR BROKER  
843.870.5930  
jdonovan@cbcatlantic.com



**COLDWELL BANKER**  
**COMMERCIAL**  
**ATLANTIC**

**3506 W Montague Ave Suite 200 | North Charleston, SC 29418**  
**cbcatlantic.com | cbcretailatlantic.com (公司地址)**

The information contained herein should be considered confidential and remains the sole property of Coldwell Banker Commercial Atlantic at all times. Although every effort has been made to ensure accuracy, no liability will be accepted for any errors or omissions. Disclosure of any information contained herein is prohibited except with the express written permission of Coldwell Banker Commercial Atlantic.